



NYS DEC Impact Study

Prepared for NY State Builders Association

Maps created by John Pabish of Davey Resource Group
Analysis by Daniel Wilson and Donald Wilson of Davey Resource Group

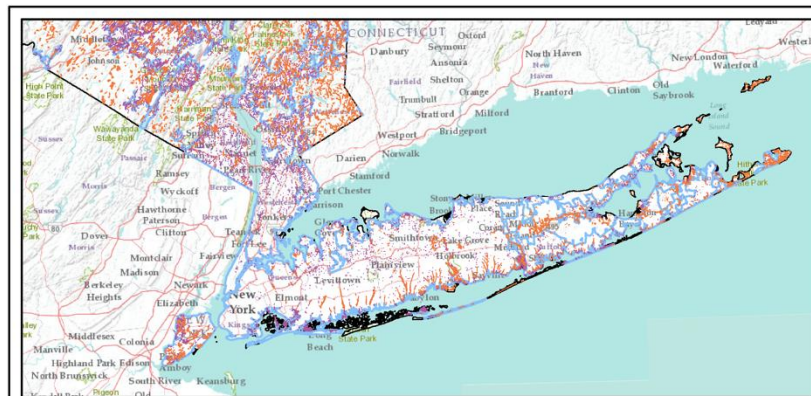
Introduction

Davey Resource Group (DRG) is an environmental consulting firm with over 25 offices and a national footprint, specializing in a wide and growing range of consulting services.

Davey understands the complex ecosystems, resource challenges, and regulatory concerns that impact the success of any environmental project. No matter the location, whether a dense city core or a remote rural site, we leverage our creativity and expertise to deliver reliable, turn-key ecological consulting services.

The New York State Builders Association (NYSBA) commissioned DRG to assist in illustrating the potential impacts of proposed Article 24 Rule Changes by the New York State Department of Environmental Conservation.

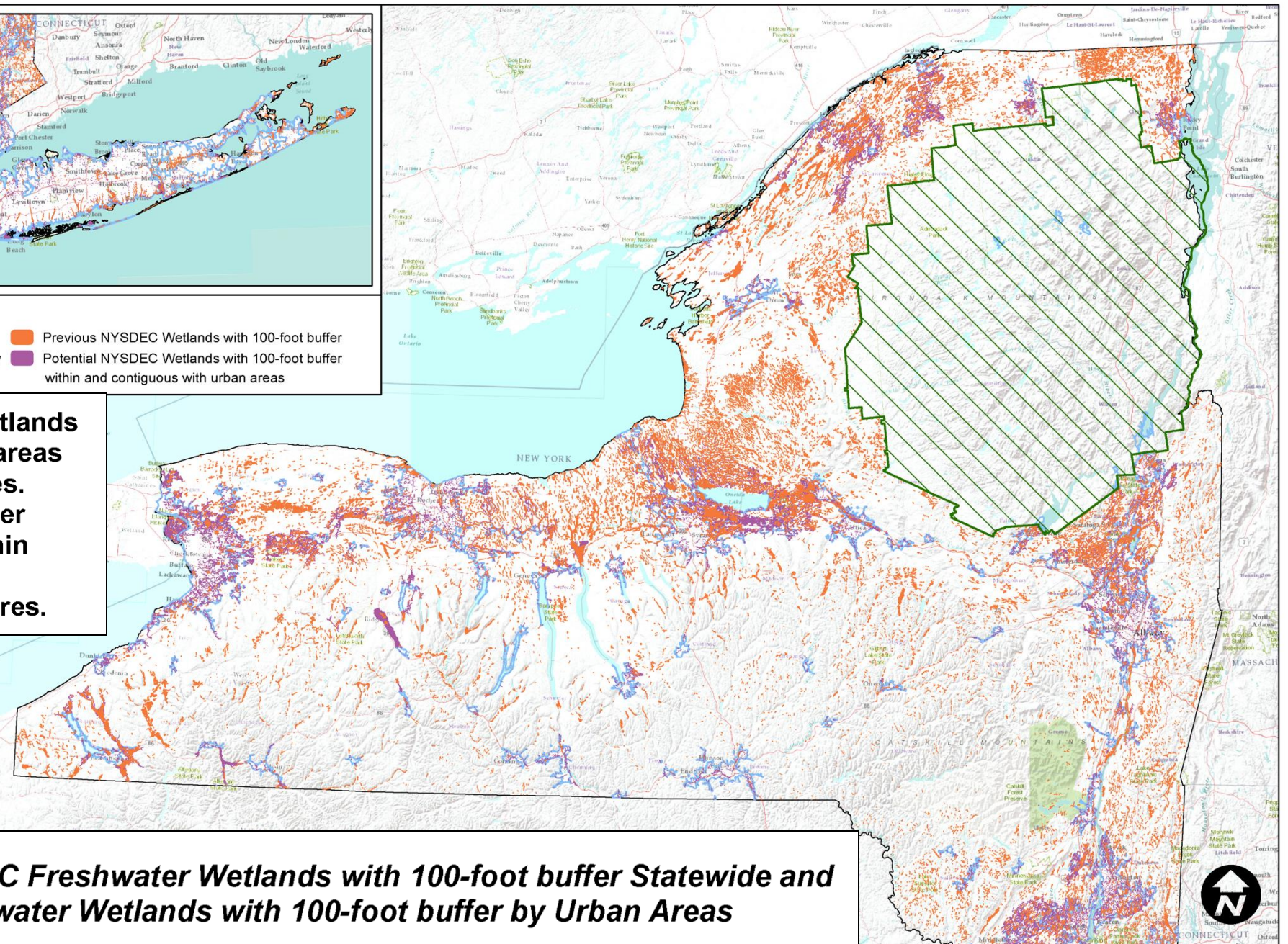
The study was funded with the assistance of the National Association of Home Builders (NAHB) State and Local Issues Fund, and with the support of the NYSBA Research and Education Foundation (REF).



Legend

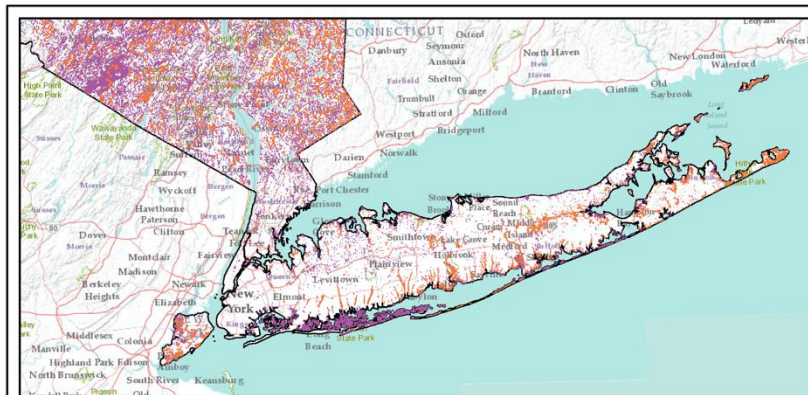
- New York State Boundary
- Adirondack Park Boundary
- Previous NYSDEC Wetlands with 100-foot buffer
- Potential NYSDEC Wetlands with 100-foot buffer within and contiguous with urban areas
- Urban Area Extent

Previous NYSDEC Freshwater Wetlands with 100-foot buffer within urban areas encompass a total of 109,724 acres. Proposed New NYSDEC Freshwater Wetlands with 100-foot buffer within and contiguous to urban areas encompass a total of 1,201,095 acres.



Composite of Previous NYSDEC Freshwater Wetlands with 100-foot buffer Statewide and Proposed New NYSDEC Freshwater Wetlands with 100-foot buffer by Urban Areas



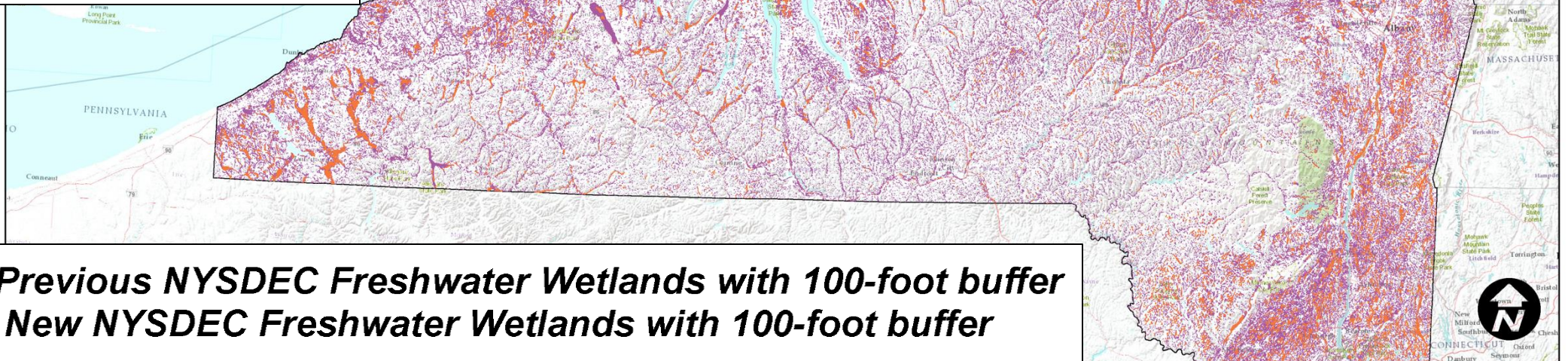


Legend

- New York State Boundary
- Adirondack Park Boundary
- Previous NYSDEC Wetlands with 100-foot buffers
- Potential NYSDEC Wetlands with 100-foot buffers

Previous NYSDEC Freshwater Wetlands with a 100-foot buffer encompass a total of 1,640,629.9 acres.

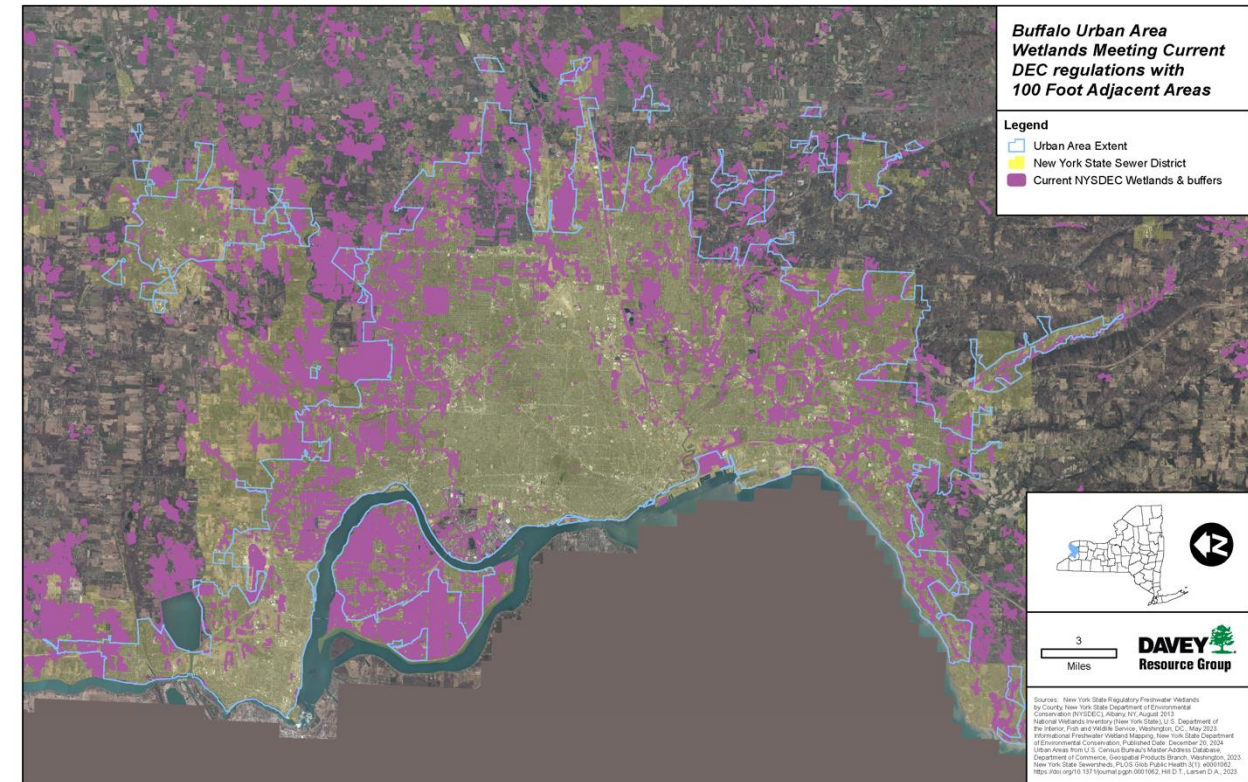
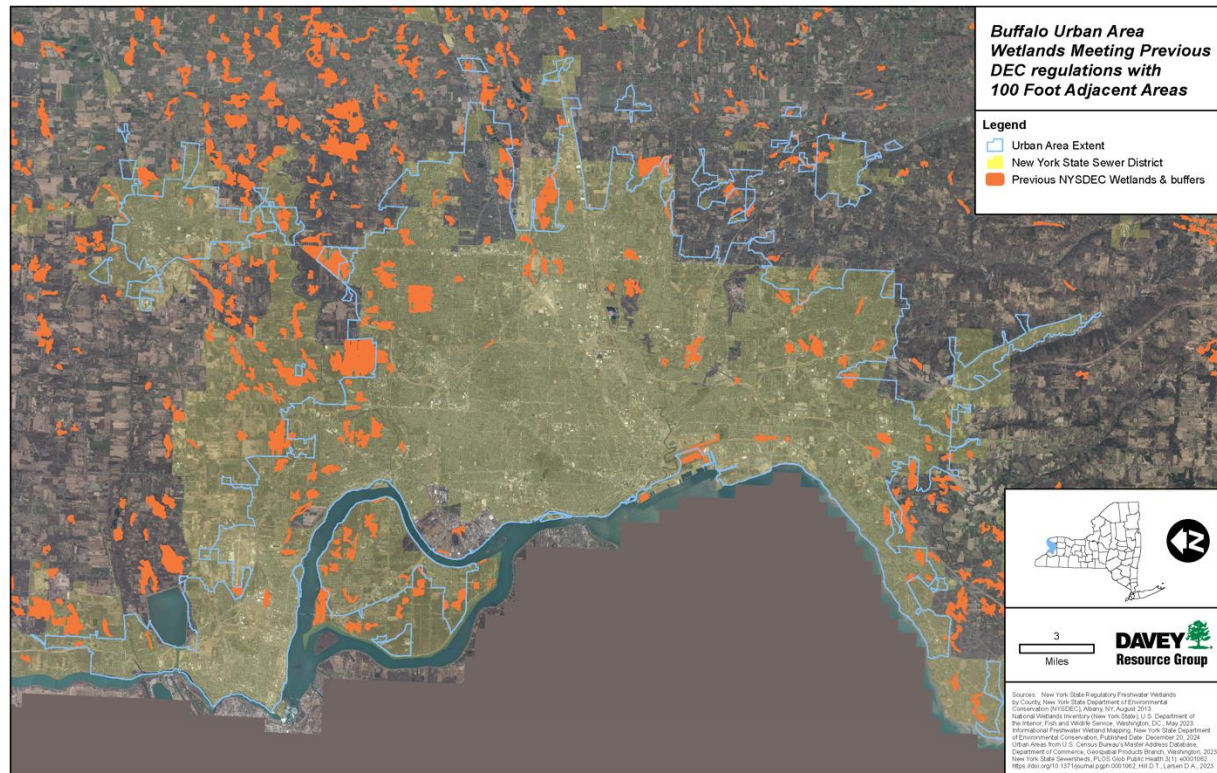
Proposed New NYSDEC Freshwater Wetlands with a 100-foot buffer encompass a total of 5,154,602.1 acres.



Composite of Previous NYSDEC Freshwater Wetlands with 100-foot buffer and Proposed New NYSDEC Freshwater Wetlands with 100-foot buffer

Buffalo's Greater Urban Area

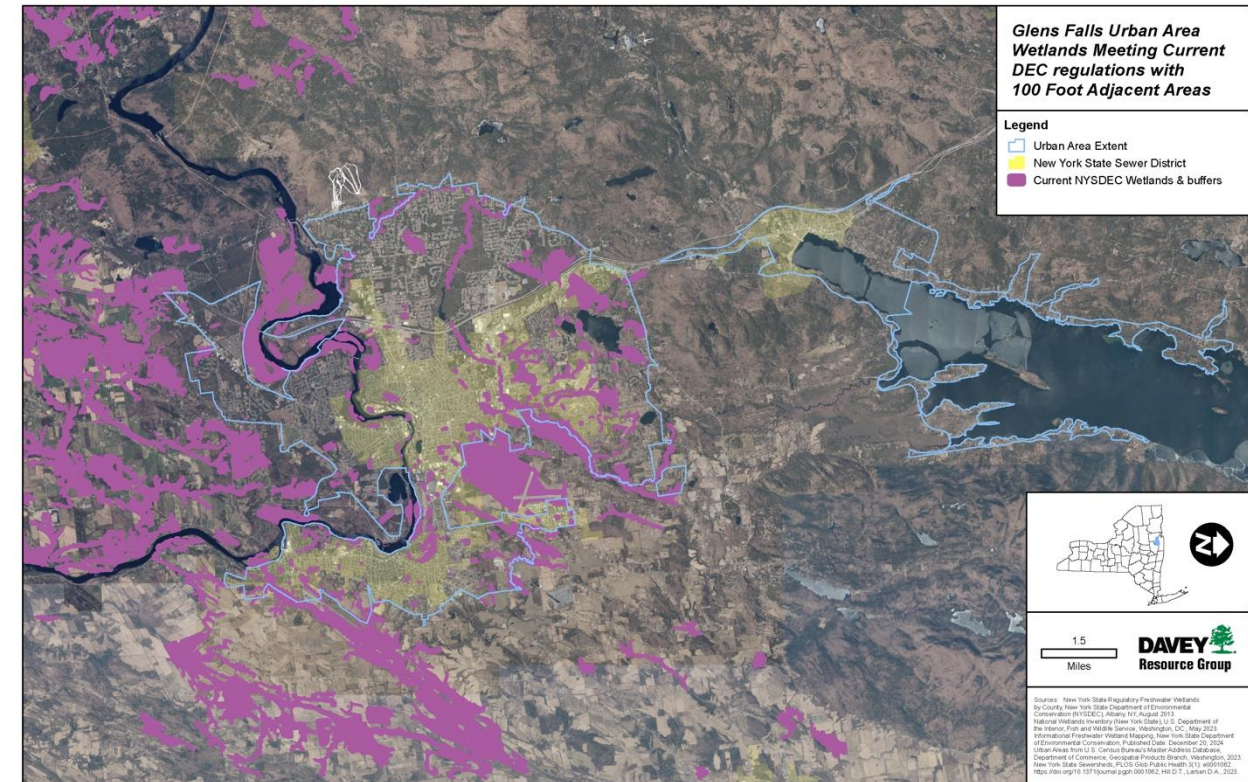
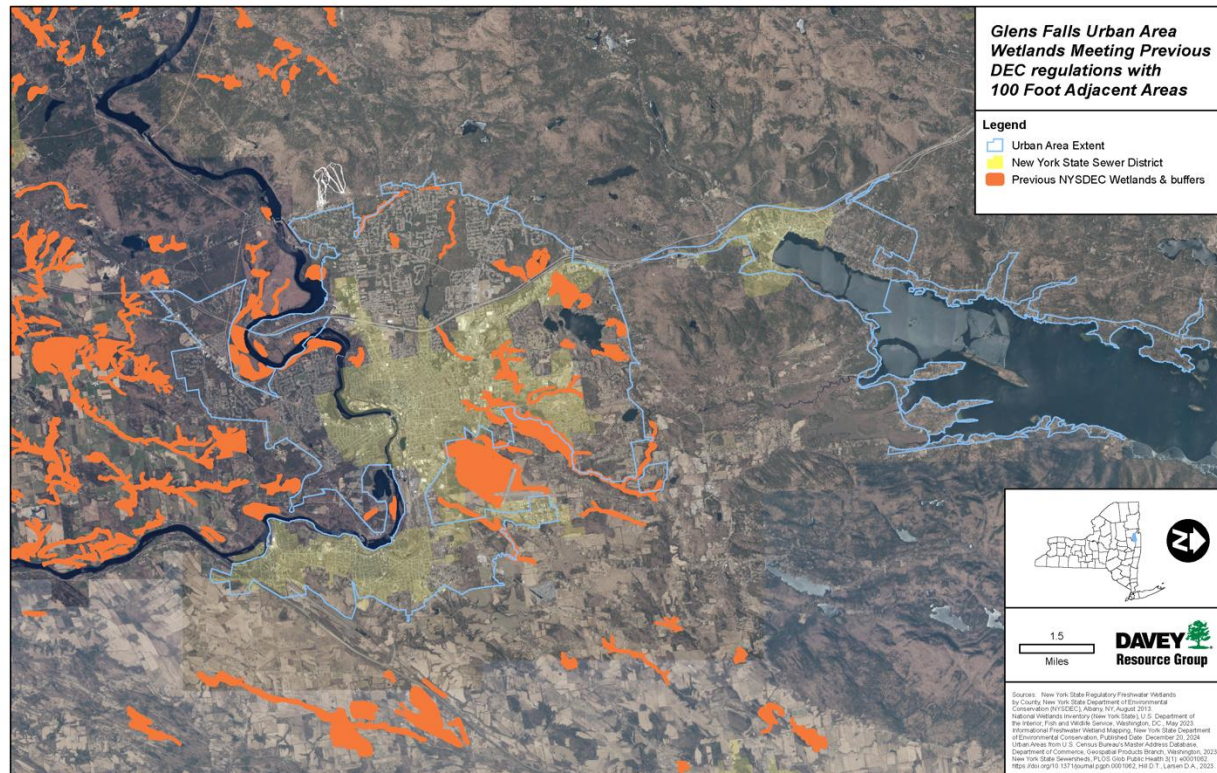
- Previously 12,765 acres of DEC wetland within urban area



- Now 87,756 Acres of DEC wetland contiguous to Urban Area
- 587% increase in wetland acreage contiguous to Urban Area

Glen Falls Urban Area

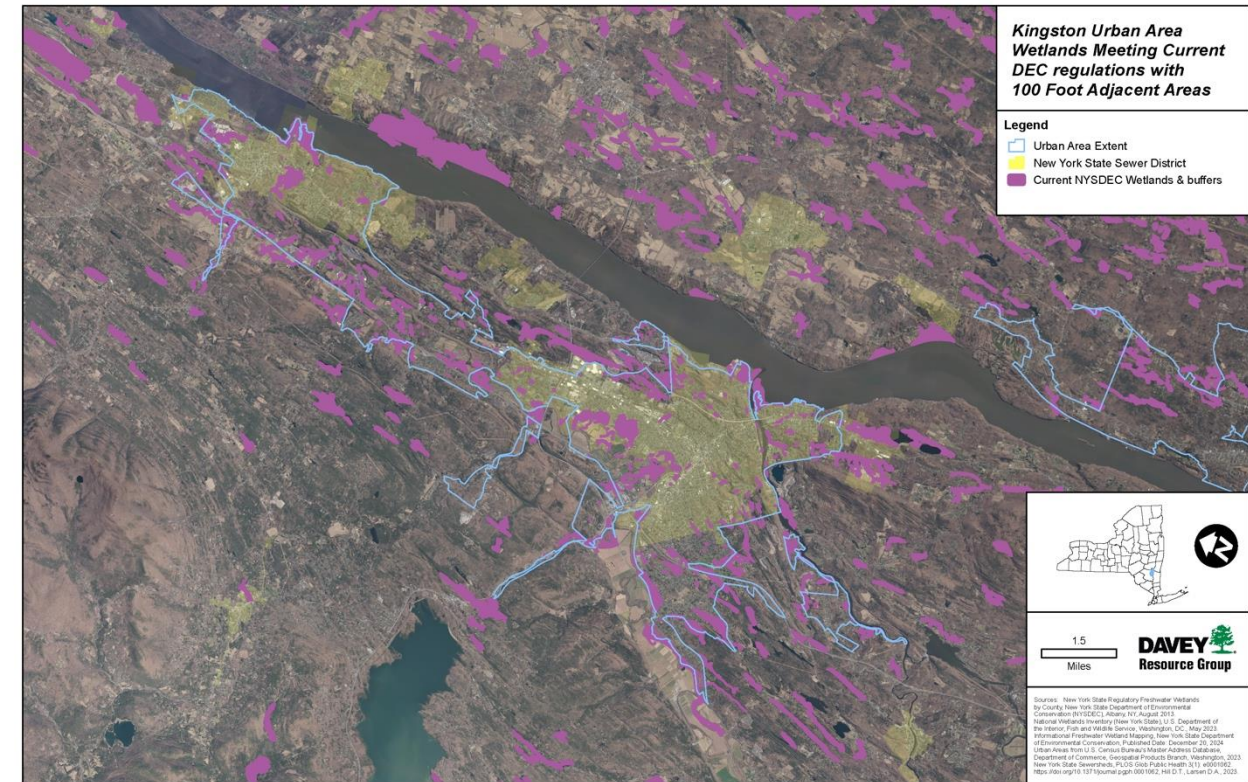
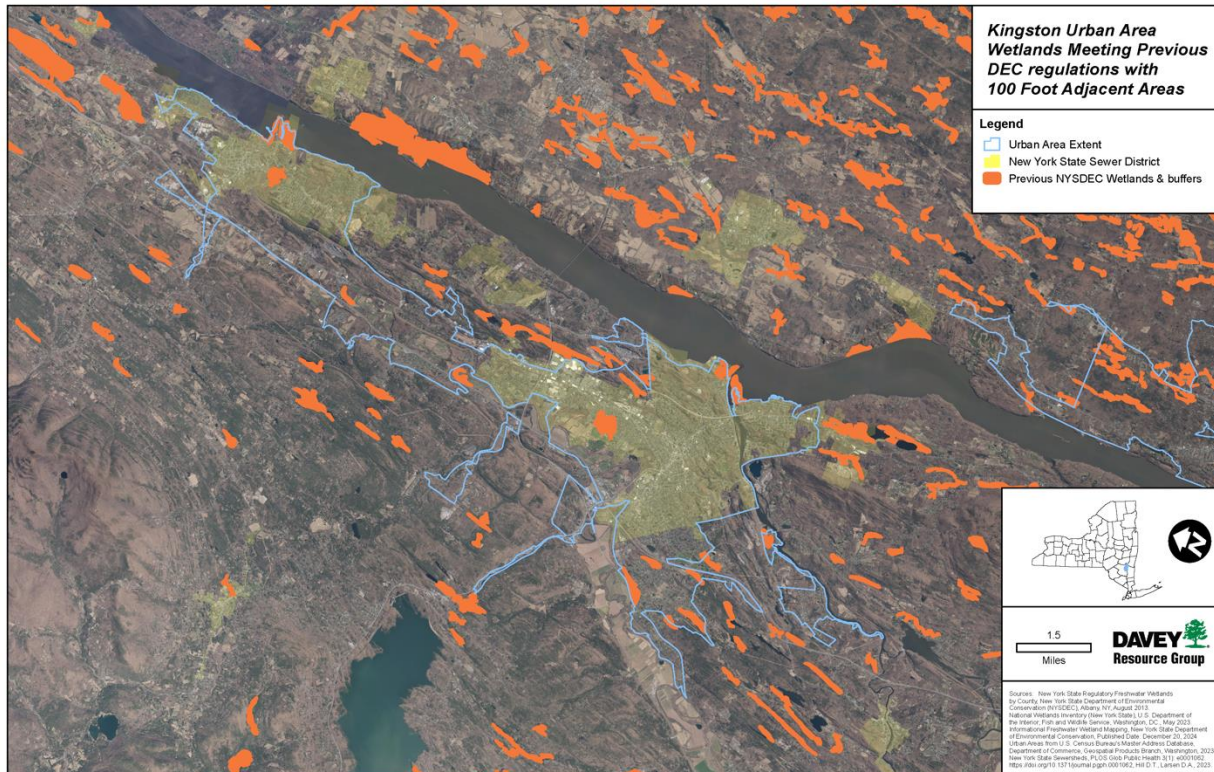
- Previously 3,429 acres of DEC wetland within urban area



- Now 12,352 Acres of DEC wetland Contiguous to Urban Area
- 260% increase in wetland acreage contiguous to Urban Area

Kingston Urban Area

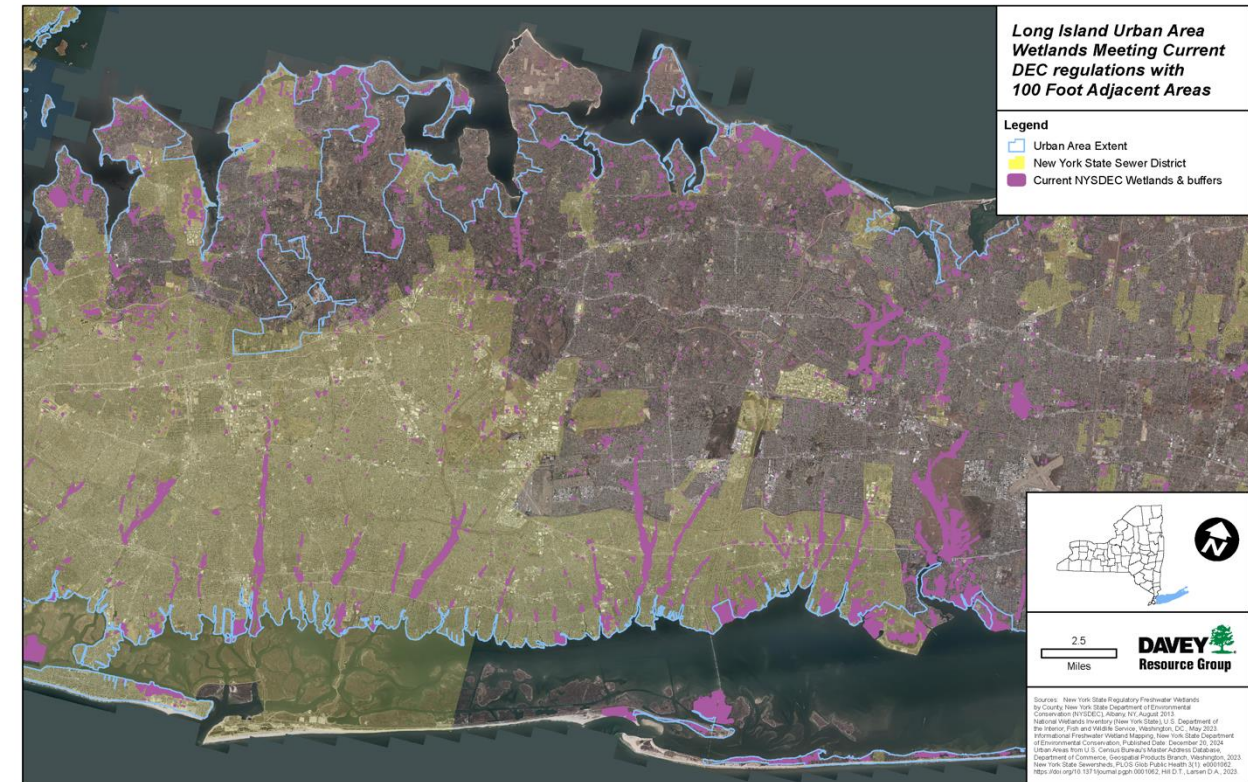
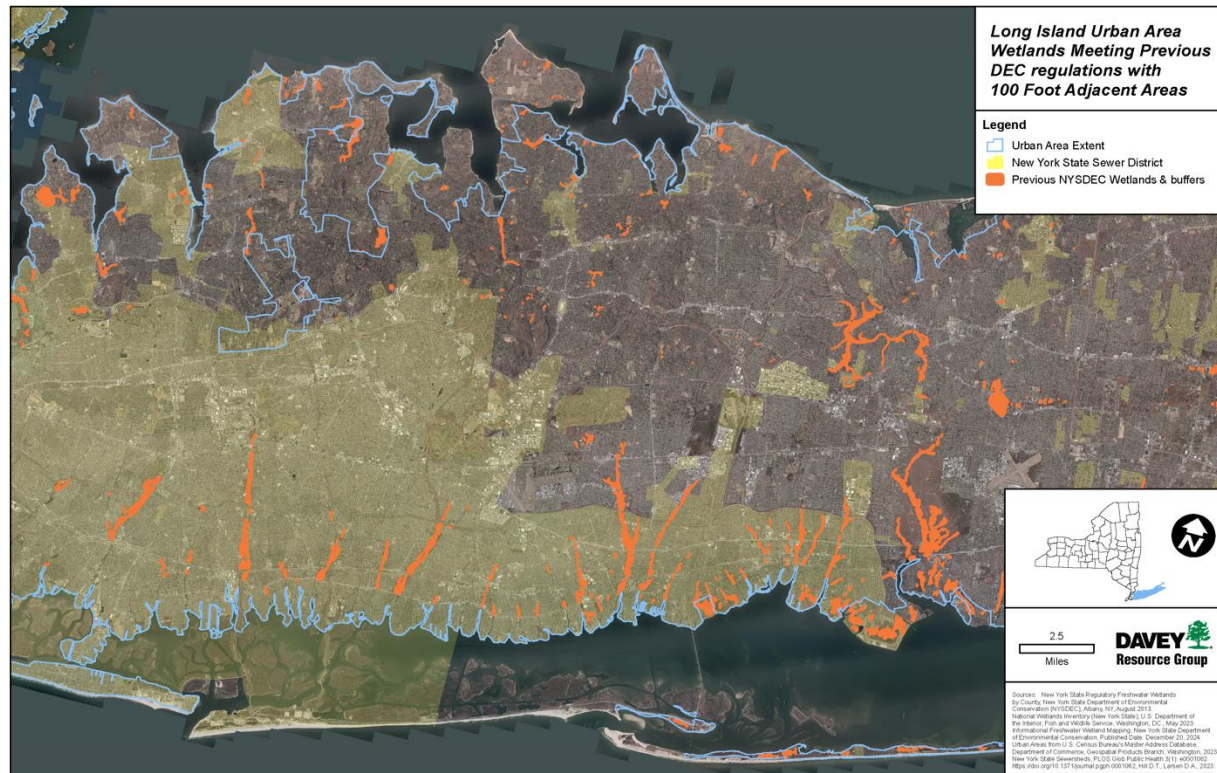
- Previously 1,003 acres of DEC wetland within and around urban area



- Now 5,278 Acres of DEC wetland Contiguous to Urban Area
- 426% increase in wetland acreage contiguous to Urban Area

Long Island Urban Area

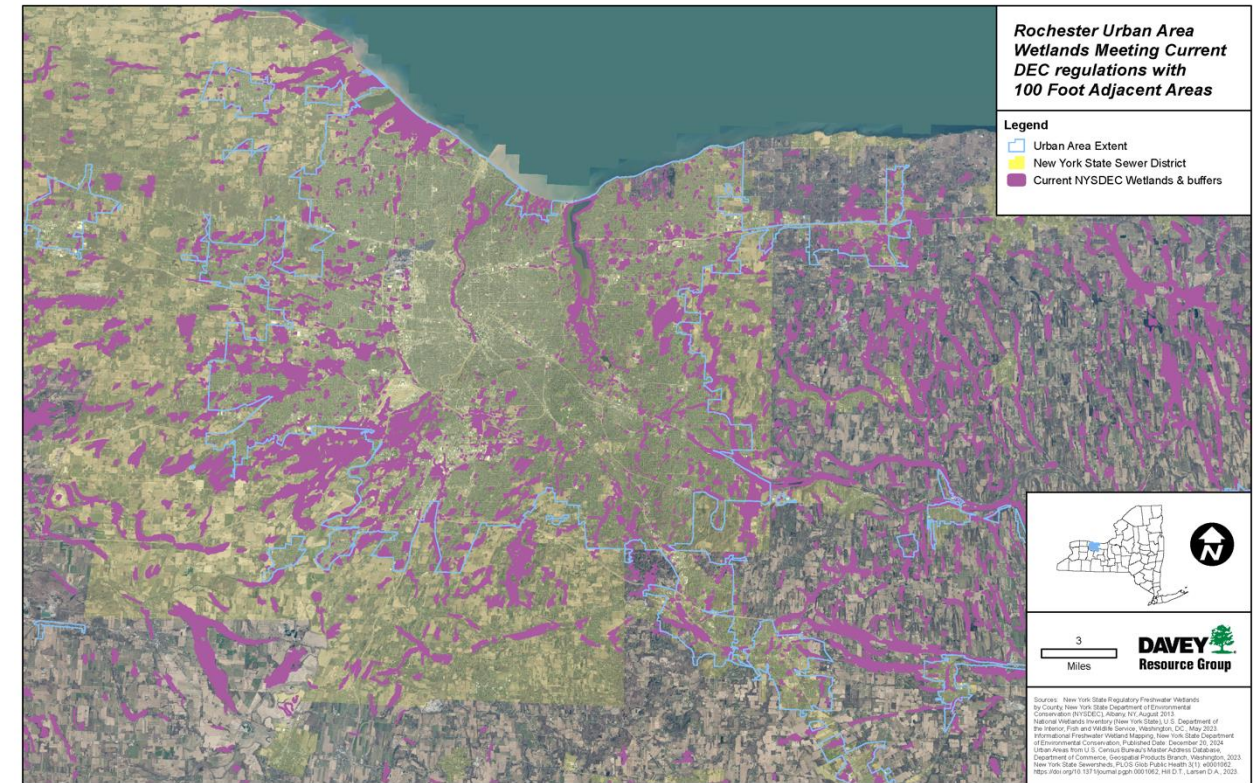
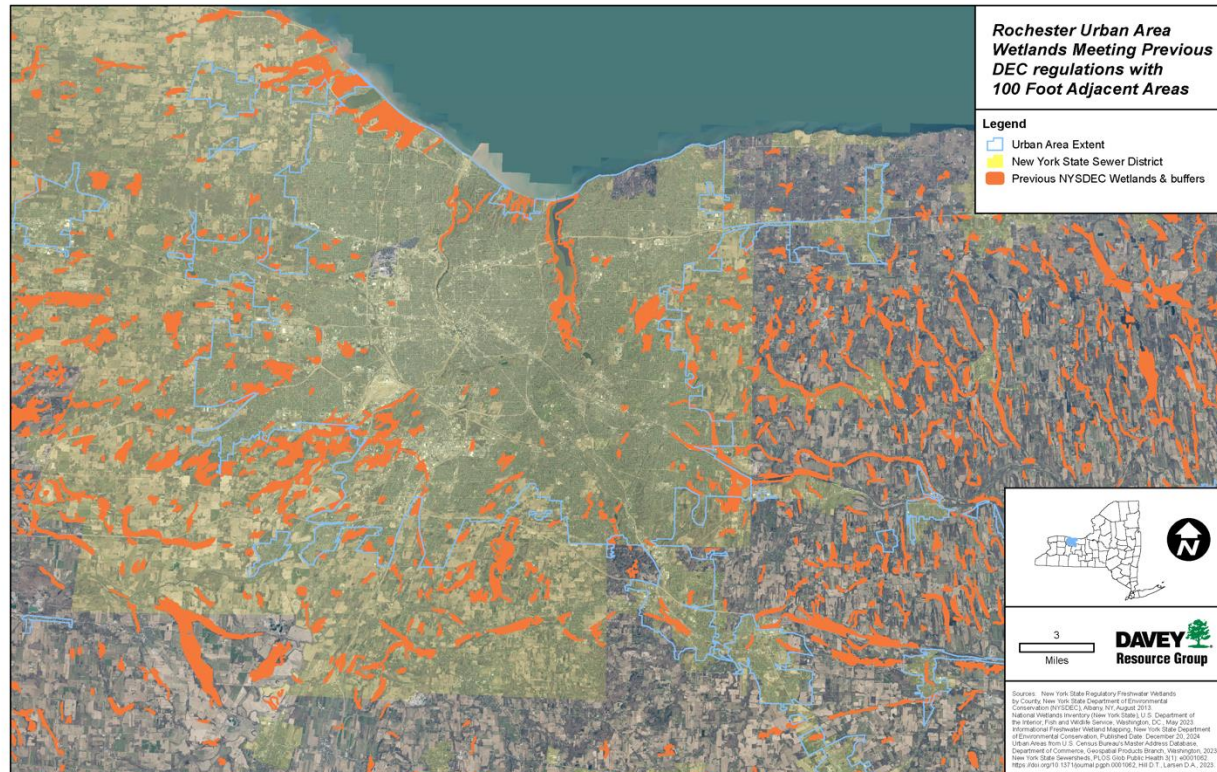
- Previously 41,337 acres of DEC wetland within and around urban area



- Now 99,891 Acres of DEC wetland contiguous to Urban Area
- 142% increase in wetland acreage contiguous to Urban Area

Rochester Urban Area

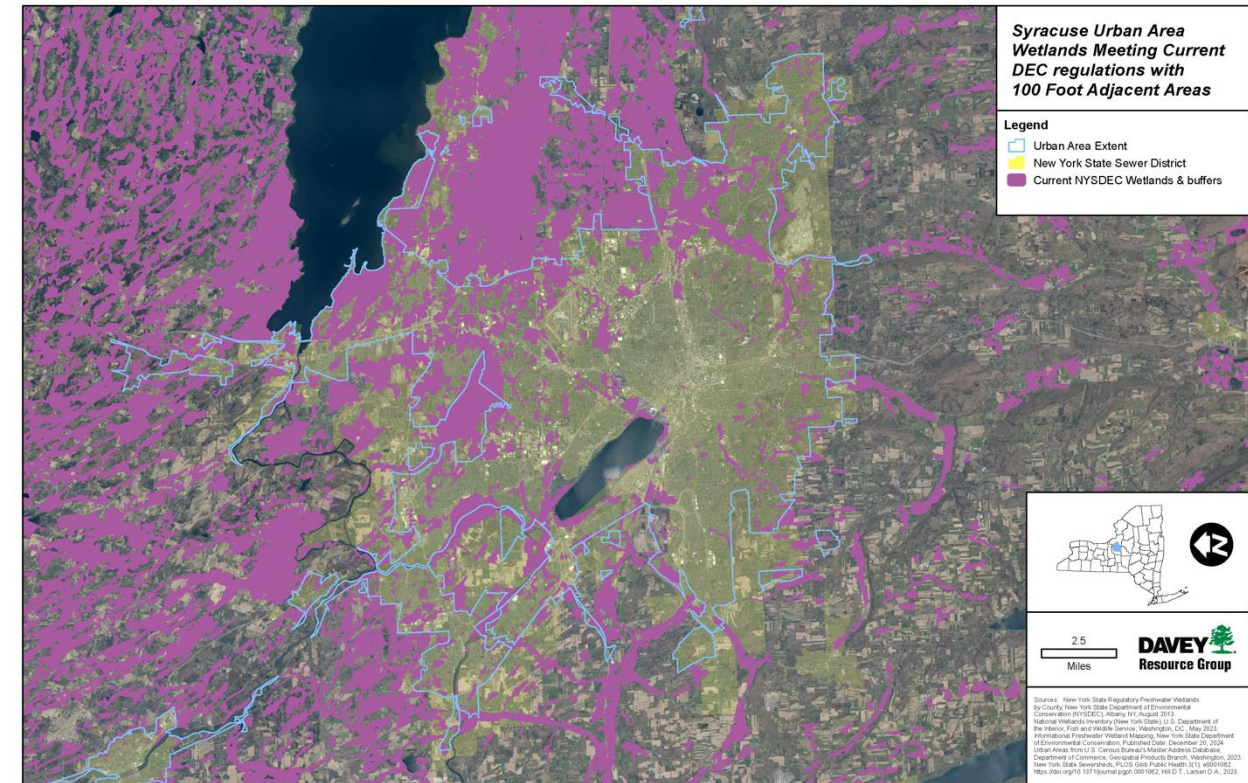
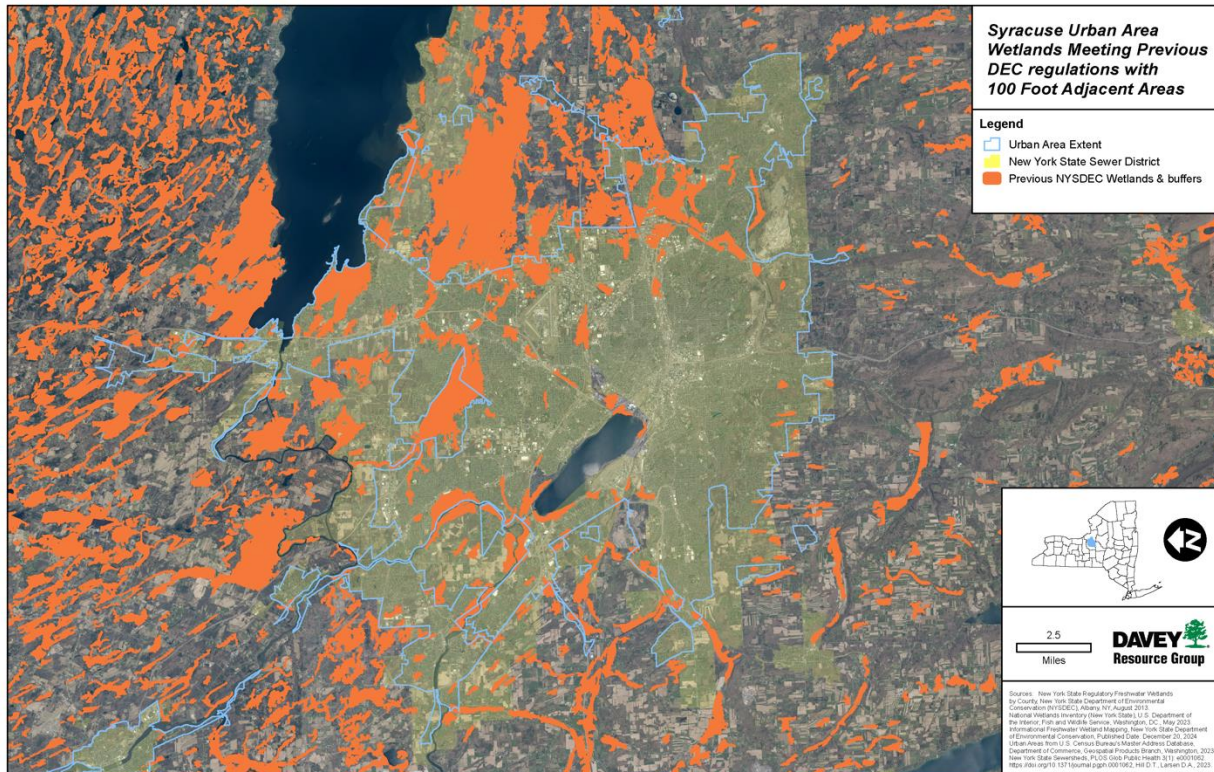
- Previously 18,984 acres of DEC wetland within urban area



- Now 50,851 Acres of DEC wetland contiguous to Urban Area
- 168% increase in wetland acreage contiguous to Urban Area

Syracuse Urban Area

- Previously 41,800 acres of DEC wetland within urban area



- Now 144,311 Acres of DEC wetland contiguous to Urban Area
- 245% increase in wetland acreage contiguous to Urban Area